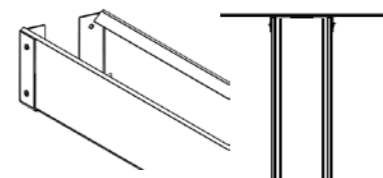
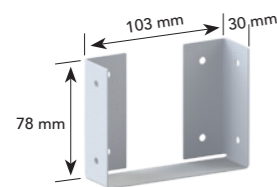


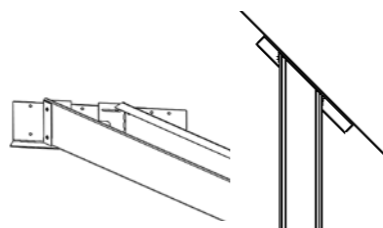
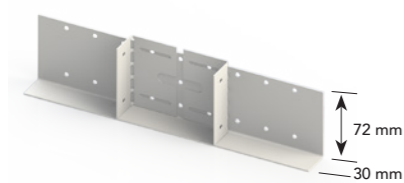
Functional ceiling, suspension



Wall bracket

244-311-001

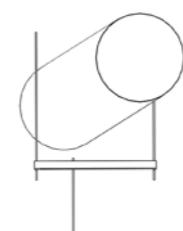
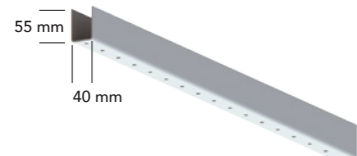
Cut channel mounted to wall perpendicular to the channel.



Wall bracket, adjustable L=300

244-207-001

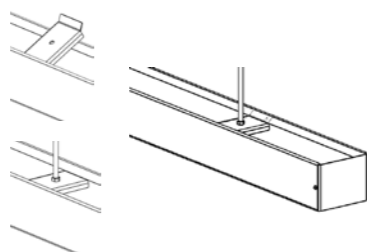
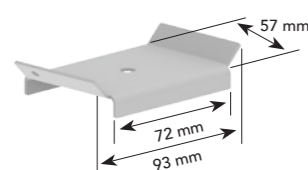
Wall support of a channel when the wall is not perpendicular to the channel. Can be adjusted to different angles between channel and wall.



Offset suspension point, L=830

244-310-001

Used to move suspension when e.g. ventilation duct is interfering. Threaded rod M6 with nuts needed (not supplied).

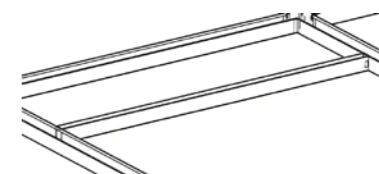
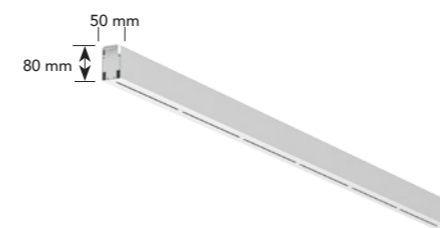


Reinforcement plate

244-312-001

Used to add an extra suspension point to a channel for increasing load capacity. Also used when a channel is cut. Threaded rod M6 with nuts needed (not supplied).

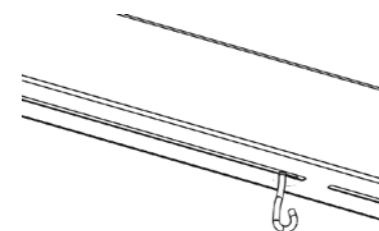
Functional ceiling, accessories



Decor channel, c-c 2000

244-208-001

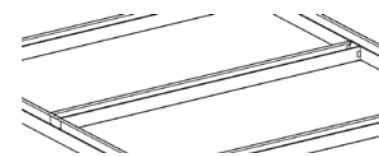
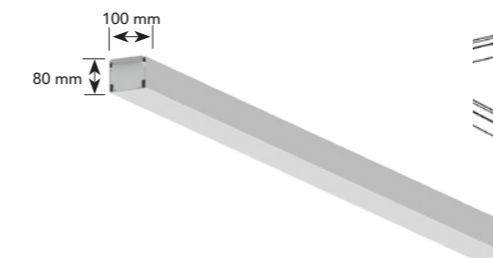
Can be mounted anywhere in the grid and got slotted holes on bottom for flexible placement of sliding decor hook (244-323-001).



Sliding decor hook

244-323-001

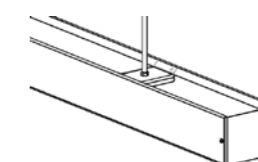
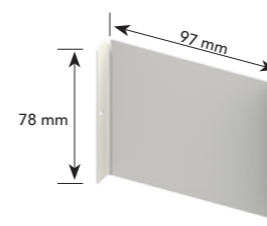
Mounted in decor channel (244-208-001) to hold signs, information banners, price tags etc.



Channel w. hooks, c-c 2000

244-205-001

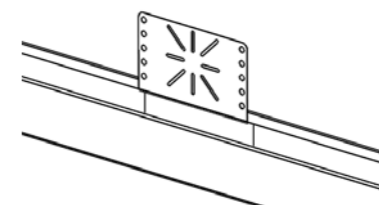
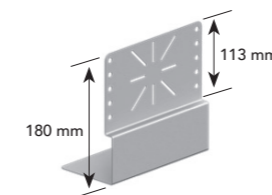
Can be mounted anywhere in the grid for flexible placement of e.g. luminaries.



End cover for cut channel

244-325-001

Cover for cut channels. Reinforcement plate (244-312-001) must be mounted on the cut channel for suspension.



Mounting plate, L=185

244-308-001

Flexible mounting plate for power outlet and other electrical installations.