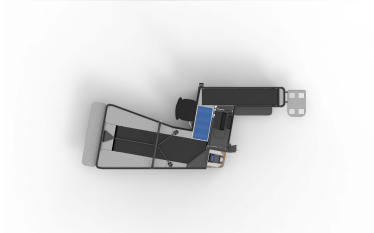
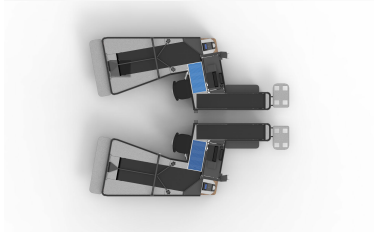
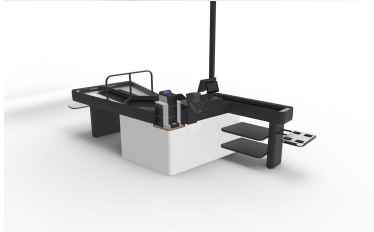
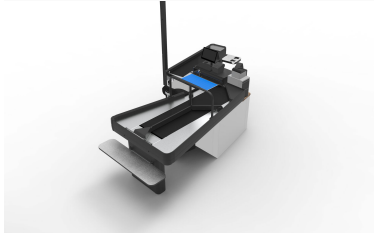
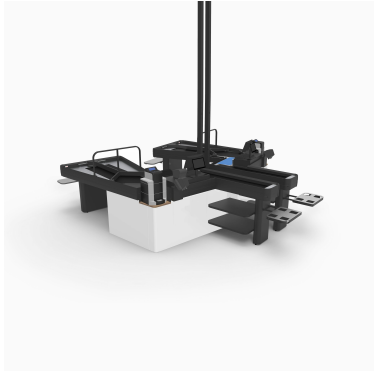


CHECKMATE Z



- ✓ Front approach towards the customer.
- ✓ Better overview of the checkout line.
- ✓ Faster customer service towards the SCO customers.
- ✓ Designed for maximum ergonomics.
- ✓ Small and straight design of the infeed help the cashier to speed up the handling of the items.



TECHNICAL SPECIFICATION

Dimensions HxLxW mm	Length: 4360 - 6000 mm Width: 1660 mm Height: 970 mm
Certifications	CE
Voltage	220-240VAC 50-60Hz Max 3A in total
Operating temperature	+10 °C to +30 °C
Customer display	Yes
Options	Yes
Packing area alternatives	Dual lane with 3rd customer functionality
Payment options	Cash & Card payment/Prepared for CG/Prepared for Safepay
Ergonomic norms	Applicable to swedish recommendations ADI566
Customisable	Yes
Installation	Indoor
Scanners	Dimensions prepared for Magellan 3200V & 3450
Operating conditions	Ambient humidity: 30-80% Storage humidity: 20-90%