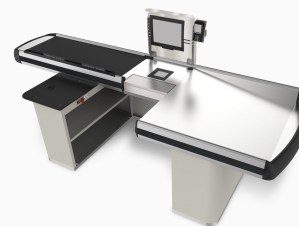


- ✓ Various types of profile heads easily transform the checkout for a different look,
- ✓ Thanks to universal and modular construction of the checkout, it is easy to switch the orientation from left to right,
- ✓ Central part of checkout can be easily combined with all common scanner models.
- ✓ A wide range of lengths gives a choice of solutions for various store formats.
- ✓ Different decoration possibilities



Technical specification

Dimensions HxLxW mm

H 890 mm x L (1793-4186) x W 1137

Weight kg

ca. 230kg (max.)

Certifications

CE

Voltage

220-240VAC

Operating temperature

+5 to +35 °C

LED light

Yes

Options

left/right, wide/narrow packing bay, Single/Tandem/Island

Packing area alternatives

wide/narrow packing bay

Payment options

prepared for most common payment options

Ergonomic norms

EN-ISO and AFNOR NF X35-701

Customisable

Yes

Installation

indoor

Scanners

prepared for most common scanners

Operating conditions

Indoor, max.70%

