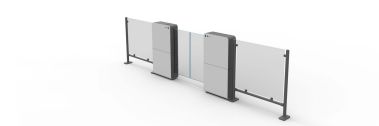
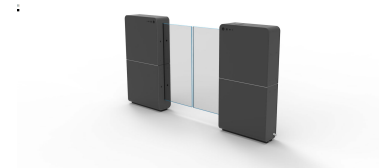
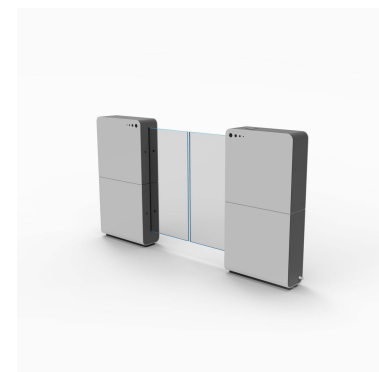


- ✓ Tilatehokas led-valaistu liukuovirakenne
- ✓ Muokattavissa visuaaliseen ilmeeseen sopivaksi
- ✓ Useita tapoja käynnistää portin avaus
- ✓ Mahdollista integroida QR tai viivakoodi skanneri
- ✓ Voidaan käyttää ITAB Sesame-ratkaisun kanssa



TECHNICAL SPECIFICATION

| | |
|-----------------------|---|
| Dimensions HxLxW mm | Standard: 200x565x1105 MPB version: 305x565x1125 |
| Weight kg | Standard: 88 kg MPB version: 96 kg |
| Certifications | CE |
| Voltage | 115-240VAC 50-60Hz |
| Operating temperature | 0-35° C |
| Automatic Panic Reset | Yes |
| Gate Arm options | Yes |
| LED light | Yes |
| Synchronized opening | Yes |
| Panic Alarm | Yes |
| Communication | Optional |
| Options | Remote control, overhead sensor, service desk switch, RFID reader |
| Customisable | Yes |
| Installation | Indoor |
| Scanners | Optional |
| Operating conditions | Indoor |