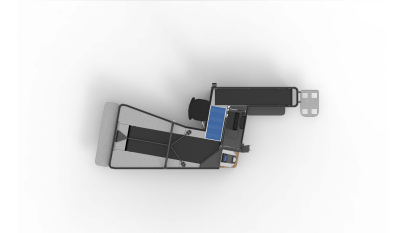
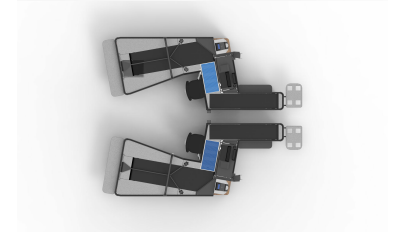
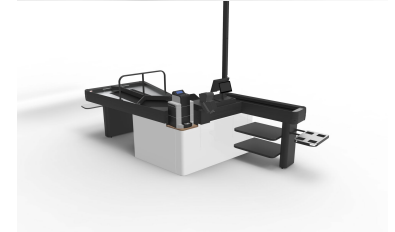
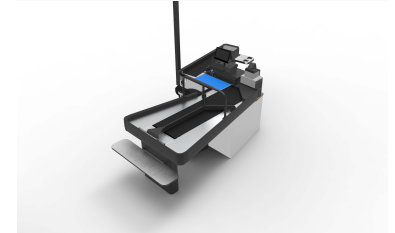


CHECKMATE Z



- ✓ De caissières zijn naar de klant gericht.
- ✓ Meer overzicht op de wachtrij bij de checkout.
- ✓ Snellere klantenservice voor de SCO-klanten.
- ✓ Ontworpen voor maximale ergonomie.
- ✓ Het klein en recht ontwerp van de invoer helpt de caissières de artikelen sneller te verwerken.



TECHNICAL SPECIFICATION

Dimensions HxLxW mm	Length: 4360 - 6000 mm Width: 1660 mm Height: 970 mm
Certifications	CE
Voltage	220-240VAC 50-60Hz Max 3A in total
Operating temperature	+10 °C to +30 °C
Customer display	Yes
Options	Yes
Packing area alternatives	Dual lane with 3rd customer functionality
Payment options	Cash & Card payment/Prepared for CG/Prepared for Safepay
Ergonomic norms	Applicable to swedish recommendations ADI566
Customisable	Yes
Installation	Indoor
Scanners	Dimensions prepared for Magellan 3200V & 3450
Operating conditions	Ambient humidity: 30-80% Storage humidity: 20-90%