

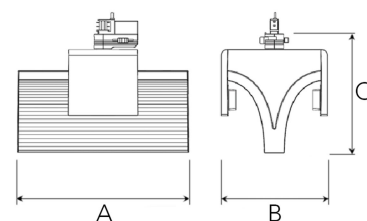
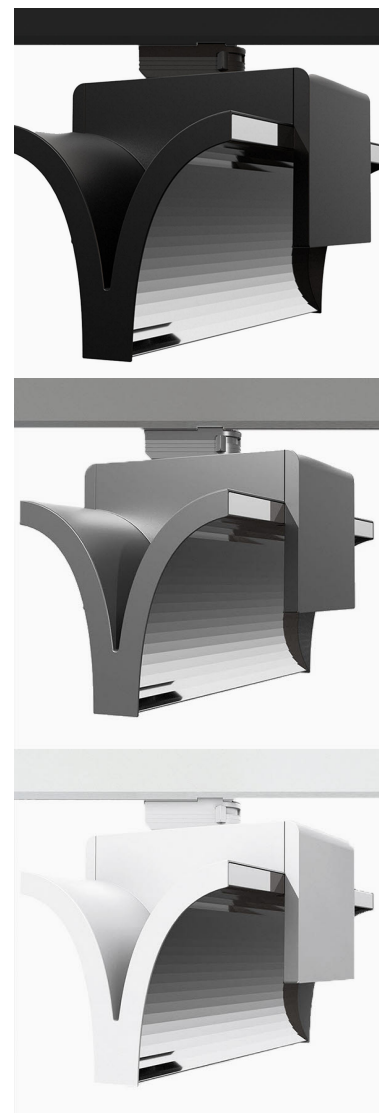
EXO II 3000, 930 (BBBL), FLOOD, GREY

ITAB

- ✓ Pure and minimalistic design
- ✓ From low to high lumens
- ✓ Very easy to adjust and flexible spacing
- ✓ Symmetrical and asymmetrical light distribution in the same design
- ✓ Available in white, black and grey.

TECHNICAL SPECIFICATION

Product Code	311-541-30
Colour	Grey
Control	On/off
CRI light colour	930
Delivered lumen output lm	2 x 2850
Driver	Built in
EEL	E
Light distribution	Flood
Lightsource	LED COB
Mains input voltage	220-240 V
Measurements A	300
Measurements B	185
Measurements C	207
Mounting	Track
Position	360°
Lifetime	L80 B10, 50.000h
Protection	IP 20, class I
Start Time	Instant
System power W	2 x 26,2
Unit	mm
Weight	1,55



A= 300mm, B= 185mm, C= 207mm

