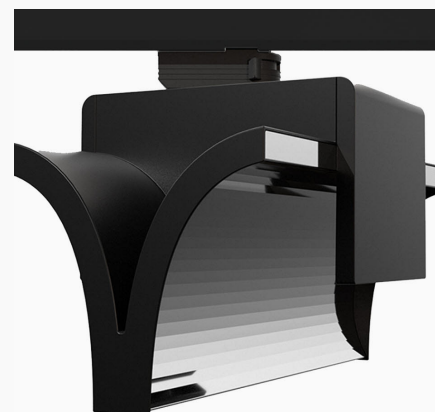


ExO II 3000, 930 (BBBL), Flood, Black

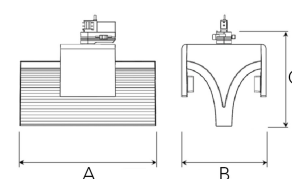
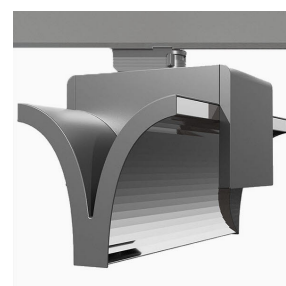
ITAB

- ✓ Pure and minimalistic design
- ✓ From low to high lumens
- ✓ Very easy to adjust and flexible spacing
- ✓ Symmetrical and asymmetrical light distribution in the same design
- ✓ Available in white, black and grey.



Technical specification

| | |
|---------------------------|------------------|
| Product Code | 311-541-20 |
| Colour | Black |
| Control | On/off |
| CRI light colour | 930 (BBBL) |
| Delivered lumen output lm | 2 x 2950 |
| Driver | Built in |
| EEL | E |
| Light distribution | Flood |
| Lightsource | LED COB |
| Mains input voltage | 220-240 V |
| Measurements A | 300 |
| Measurements B | 185 |
| Measurements C | 207 |
| Mounting | Track |
| Position | 360° |
| Lifetime | L80 B10, 50.000h |
| Protection | IP 20, class I |
| Start Time | Instant |
| System power W | 2 x 22,6 |
| Unit | mm |
| Weight | 1,55 |



A= 300mm, B= 185mm, C= 207mm

